



PINNACLE — ANALYTICS —

Potency Results

Sample Name: *Sour Hawaiian Haze*
Client: Farm 127
Client Batch ID:

Pinnacle-Analytics.com
3549 Lear Way, Suite 101
Medford OR 97504
P:(541)300-8217

Sample ID: rC-H-370-D997

Date Sampled: 8/7/2023
Date Reported: 8/10/2023
Client License: *Redacted*

Matrix: Flower

Prep Analyst: Megan E.

Analysis Method: 0630322+1 H3 4-20-2022 #1.lcm

Sampling Method: N/A

Reference Method: JCB 2009: HPLC/DAD

Analysis Batch: 8-7-2023 H3 14, 22, 185, 205, 302, 370 Flower

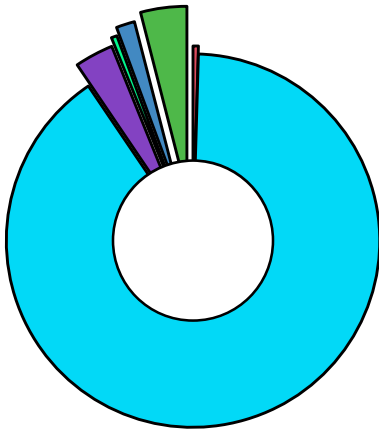
For R&D Purposes Only

Total THC (THCA*0.877+d9-THC) **0.762%**
Total CBD (CBDA*0.877+CBD) **17.5%**
Moisture Content **12.7%**

Cannabinoid	% Weight	mg/g
CBDVA	0.101	1.01
CBDV	<LOQ	<LOQ
CBDA*	19.5	195.0
CBGA	0.724	7.24
CBG	0.108	1.08
CBD*	0.349	3.49
THCV	<LOQ	<LOQ
CBN	<LOQ	<LOQ
d9-THC*	<LOQ	<LOQ
d8-THC*	<LOQ	<LOQ
CBC	<LOQ	<LOQ
THCA*	0.869	8.69
Total Cannabinoids	21.7	217.0

*ORELAP Accredited Analyte

Limit Of Quantitation: 0.1%, analyte not measured



CBDVA	CBG
CBDA*	CBD*
CBGA	THCA*



These test results may not be altered or reproduced except in full without the permission of Pinnacle Analytics. These results were generated following the Oregon Administrative Rules and in accordance with the NELAP Institute under ORELAP License #4152
Report generated by Routine_Potency_Rev11_4-16-2023

Kris Ford, PhD
Lab Director



PINNACLE — ANALYTICS —

Quality Control Results

Analyst: Megan E.

Analysis Batch: 8-7-2023 H3 14, 22, 185, 205, 302, 370 Flower

Pinnacle-Analytics.com
3549 Lear Way, Suite 101
Medford OR 97504
P:(541)300-8217

	Duplicate RPD		LCS % Recovery		Method Blank	
	H-0-D992-b	Limit	C-FL-080723	Limits	C-FB-080723	Limit
CBDA	3.93%	10%	103.0%	90-110%	<LOQ/2	LOQ/2
CBD	3.83%	10%	104.0%	90-110%	<LOQ/2	LOQ/2
d9-THC	4.13%	10%	96.6%	90-110%	<LOQ/2	LOQ/2
d8-THC	14.6%	10%	97.6%	90-110%	<LOQ/2	LOQ/2
THCA	12.7%	30%	94.3%	90-110%	<LOQ/2	LOQ/2


RPD: Relative Percent Difference between unknown sample and its duplicate

LCS: Laboratory Control Sample with known concentration

Case Comments: Matrix duplicate had marginal RPD exceedence due to sample inhomogeneity. All other QC's passed. Results considered valid



These test results may not be altered or reproduced except in full without the permission of Pinnacle Analytics. These results were generated following the Oregon Administrative Rules and in accordance with the NELAP Institute under ORELAP License #4152
Report generated by Routine_Potency_Rev11_4-16-2023


Kris Ford, PhD
Lab Director

PREE Laboratories - South
545 SW 2nd St, #202, Corvallis, OR 97333
541-257-5002 / OLCC 010-10087092BDA / www.PREElab.com

127 - SHH - 23 - AGH

Pinnacle Analytics

010-101599328A3

Confident Cannabis ID: 2310PREE1269.5419

Sample ID: C231490-06

Matrix: Useable Marijuana

METRC Batch #:

Sampling Method/SOP: FSOP #101

Date Sampled: 10/5/2023 9:15:00AM

Date Accepted: 10/05/23

Harvest/Process Lot ID:

Batch ID:

Batch Size (g):

Unit for Sale:

Harvest/Production Date:

Moisture Content

Date/Time Analyzed: 10/10/23 11:15
Analysis Method/SOP: LSOP #301

Moisture: 7.880 %

"Total THC" and "Total CBD" are calculated values and are an Oregon reporting requirement (OAR 333-064-0100). For Cannabinoid analysis, only delta 9-THC, delta 8-THC, THCA, CBD and CBDA are ORELAP accredited analytes. Cannabinoid values reported for plant matter are dry weight corrected; Oregon Water Activity action level is 0.65Aw and Oregon Moisture Content action level is 15%. Samples above limit will be highlighted RED; FD = Field Duplicate; LOQ = Limit of Quantitation.



Carson Newkirk
Laboratory Manager - 10/12/2023

Page 1 of 4

PREE Laboratories - South
545 SW 2nd St, #202, Corvallis, OR 97333
541-257-5002 / OLCC 010-10087092BDA / www.PREElab.com

FOR INFORMATIONAL USE ONLY - NOT FOR REGULATORY PURPOSES

127 - SHH - 23 - AGH

Pinnacle Analytics

010-101599328A3

Sample ID: C231490-06 METRC Batch #:

Matrix: Useable Marijuana

Date Sampled: 10/05/23 09:15

Date Accepted: 10/05/23

Batch ID:

Batch Size:

Sampling Method/SOP: SOP.T.20.010

Terpene Analysis

Date/Time Extracted: 10/11/23 12:44

Analysis Method/SOP: SOP.T.40.092

Date/Time Analyzed: 10/11/23 20:04

Sample extracted and analyzed at PREE Lab - North

Analyte	LOQ (mg/g)	Mass (mg/g)	Mass (%)	Analyte	LOQ (mg/g)	Mass (mg/g)	Mass (%)
alpha-Pinene	0.100	2.38	0.238	beta-Pinene	0.100	0.847	0.0847
Camphene	0.100	< LOQ	< LOQ	Sabinene	0.100	< LOQ	< LOQ
Sabinene hydrate	0.100	< LOQ	< LOQ	beta-Myrcene	0.100	5.88	0.588
p-Mentha-1,5-diene	0.100	< LOQ	< LOQ	(+)-3-Carene	0.100	< LOQ	< LOQ
alpha-Terpinene	0.100	< LOQ	< LOQ	gamma-Terpinene	0.100	< LOQ	< LOQ
Limonene	0.100	0.724	0.0724	Eucalyptol	0.100	< LOQ	< LOQ
Guaiol	0.100	1.36	0.136	Terpinolene	0.100	< LOQ	< LOQ
Linalool	0.100	0.318	0.0318	Camphor	0.100	< LOQ	< LOQ
(+)-Camphor	0.100	< LOQ	< LOQ	(-)-Camphor	0.100	< LOQ	< LOQ
Isopulegol	0.100	< LOQ	< LOQ	Isoborneol	0.100	< LOQ	< LOQ
Borneol	0.100	0.154	0.0154	Hexahydrothymol	0.100	< LOQ	< LOQ
Geraniol	0.100	0.162	0.0162	(+)-Pulegone	0.100	< LOQ	< LOQ
Nerol	0.100	< LOQ	< LOQ	cis-Nerolidol	0.100	< LOQ	< LOQ
trans-Nerolidol	0.100	0.253	0.0253	Geranyl acetate	0.100	< LOQ	< LOQ
alpha-Cedrene	0.100	< LOQ	< LOQ	trans-Caryophyllene	0.100	1.13	0.113
Caryophyllene Oxide	0.100	0.157	0.0157	alpha-Humulene	0.100	0.535	0.0535
Valencene	0.100	< LOQ	< LOQ	alpha-Farnesene	0.100	< LOQ	< LOQ
beta-Farnesene	0.100	< LOQ	< LOQ	Cedrol	0.100	0.125	0.0125
alpha-Bisabolol	0.100	0.651	0.0651	Fenchone	0.100	< LOQ	< LOQ
Fenchyl Alcohol	0.100	0.184	0.0184	trans, beta- Ocimene	0.100	< LOQ	< LOQ
beta, cis- Ocimene	0.100	0.235	0.0235	Terpineol	0.100	0.378	0.0378
Total (Sum):						15.47	1.55

Analysis performed on GCMS with confirmation ion identification. Terpene analysis is not ORELAP accredited. Results reported as dry weight. LOQ = Limit of Quantitation.



Carson Newkirk
Laboratory Manager - 10/12/2023

PREE Laboratories - South
545 SW 2nd St, #202, Corvallis, OR 97333
541-257-5002 / OLCC 010-10087092BDA / www.PREElab.com

127 - SHH - 23 - AGH

Date Sampled: 10/05/23 09:15

Date Accepted: 10/05/23 09:15

Results Valid Until: 10/04/24

Pinnacle Analytics

010-101599328A3

Sample ID: C231490-06

METRC Batch Package #:

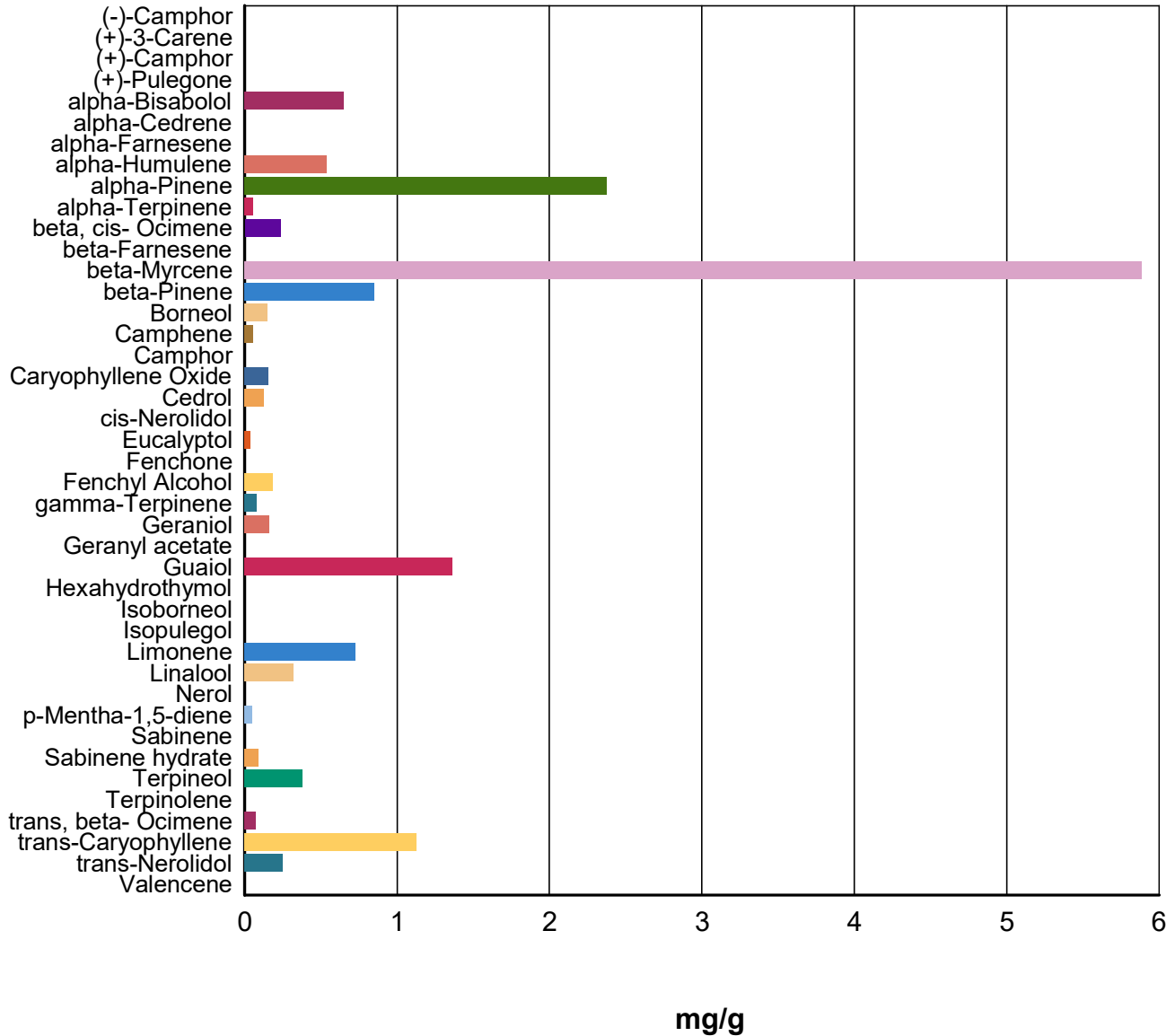
Batch ID:

Batch Size:

Matrix: Useable Marijuana

Sampling Method/SOP: SOP.T.20.010

Terpene Profile



Carson Newkirk
Laboratory Manager - 10/12/2023

PREE Laboratories - South
545 SW 2nd St, #202, Corvallis, OR 97333
541-257-5002 / OLCC 010-10087092BDA / www.PREElab.com

Notes and Definitions

Item	Definition
HIGH BIAS	High analyte recovery, yet no detection of that analyte in samples.



Carson Newkirk
Laboratory Manager - 10/12/2023

PREE Laboratories - South
545 SW 2nd St, #202, Corvallis, OR 97333
541-257-5002 / OLCC 010-10087092BDA / www.PREElab.com

FOR INFORMATIONAL USE ONLY - NOT FOR REGULATORY PURPOSES

Composite Sample (02,03,04,05,06)

Pinnacle Analytics
010-101599328A3

Sample ID: C231490-01

METRC Batch #:

Matrix: Useable Marijuana

Date Sampled: 10/05/23 09:15

Date Accepted: 10/05/23

Batch ID: 127 - 23 - AGH

Batch Size:

Sampling Method/SOP: SOP.T.20.010

Pesticides

Date/Time Extracted: 10/11/23 10:56

Date/Time Analyzed: 10/12/2023 9:38:00AM

Analysis Method/SOP: SOP.T.40.050 / SOP.T.40.051

Sample extracted and analyzed at PREE Lab - North

Analyte	LOQ	Action Level	Result	Units	Type
Abamectin	0.200	0.5	< LOQ	ppm	
Acephate	0.200	0.4	< LOQ	ppm	Organophosphate insecticide
Acequinocyl	1.00	2	< LOQ	ppm	
Acetamiprid	0.100	0.2	< LOQ	ppm	Neonicotinoid insecticide
Aldicarb	0.200	0.4	< LOQ	ppm	Carbamate insecticide
Azoxystrobin	0.100	0.2	< LOQ	ppm	
Bifenazate	0.100	0.2	< LOQ	ppm	Unclassified insecticide
Bifenthrin	0.100	0.2	< LOQ	ppm	
Boscalid	0.200	0.4	< LOQ	ppm	Anilide fungicide
Carbaryl	0.100	0.2	< LOQ	ppm	Carbamate insecticide
Carbofuran	0.100	0.2	< LOQ	ppm	Carbamate insecticide
Chlorantraniliprole	0.100	0.2	< LOQ	ppm	Anthranilic diamide insecticide
Chlorfenapyr	0.400	1	< LOQ	ppm	Pyrazole insecticide
Chlorpyrifos	0.100	0.2	< LOQ	ppm	Organophosphate insecticide
Clofentezine	0.100	0.2	< LOQ	ppm	
Cyfluthrin	0.400	1	< LOQ	ppm	
Cypermethrin	0.400	1	< LOQ	ppm	
Daminozide	0.400	1	< LOQ	ppm	
DDVP (Dichlorvos)	0.400	1	< LOQ	ppm	
Diazinon	0.100	0.2	< LOQ	ppm	Organophosphate insecticide
Dimethoate	0.100	0.2	< LOQ	ppm	
Ethoprophos	0.100	0.2	< LOQ	ppm	
Etofenprox	0.200	0.4	< LOQ	ppm	
Etoxazole	0.100	0.2	< LOQ	ppm	Unclassified miticide
Fenoxycarb	0.100	0.2	< LOQ	ppm	
Fenpyroximate	0.200	0.4	< LOQ	ppm	
Fipronil	0.200	0.4	< LOQ	ppm	Pyrazole insecticide
Flonicamid	0.400	1	< LOQ	ppm	Pyridinecarboxamide insecticide
Fludioxonil	0.200	0.4	< LOQ	ppm	non-systemic fungicide
Hexythiazox	0.400	1	< LOQ	ppm	
Imazalil	0.100	0.2	< LOQ	ppm	Azole fungicide
Imidacloprid	0.200	0.4	< LOQ	ppm	Neonicotinoid insecticide
Kresoxim-methyl	0.200	0.4	< LOQ	ppm	
Malathion	0.100	0.2	< LOQ	ppm	
Metalaxyl	0.100	0.2	< LOQ	ppm	
Methiocarb	0.100	0.2	< LOQ	ppm	Carbamate insecticide
Methomyl	0.200	0.4	< LOQ	ppm	Carbamate insecticide



Carson Newkirk
Laboratory Manager - 10/12/2023

PREE Laboratories - South
545 SW 2nd St, #202, Corvallis, OR 97333
541-257-5002 / OLCC 010-10087092BDA / www.PREElab.com
FOR INFORMATIONAL USE ONLY - NOT FOR REGULATORY PURPOSES

Composite Sample (02,03,04,05,06)

Pinnacle Analytics
010-101599328A3

Sample ID: C231490-01

METRC Batch #:

Matrix: Useable Marijuana

Date Sampled: 10/05/23 09:15

Date Accepted: 10/05/23

Batch ID: 127 - 23 - AGH

Batch Size:

Sampling Method/SOP: SOP.T.20.010

Pesticides

Date/Time Extracted: 10/11/23 10:56

Date/Time Analyzed: 10/12/2023 9:38:00AM

Analysis Method/SOP: SOP.T.40.050 / SOP.T.40.051

Sample extracted and analyzed at PREE Lab - North

Analyte	LOQ	Action Level	Result	Units	Type
Methyl parathion	0.100	0.2	< LOQ	ppm	
MGK-264	0.100	0.2	< LOQ	ppm	
Myclobutanil	0.100	0.2	< LOQ	ppm	Azole fungicide
Naled	0.200	0.5	< LOQ	ppm	
Oxamyl	0.400	1	< LOQ	ppm	Carbamate insecticide
Paclobutrazol	0.200	0.4	< LOQ	ppm	Azole plant growth regulator
Permethrins	0.100	0.2	< LOQ	ppm	
Phosmet	0.100	0.2	< LOQ	ppm	Organophosphate insecticide
Piperonyl butoxide	1.00	2	< LOQ	ppm	
Prallethrin	0.100	0.2	< LOQ	ppm	
Propiconazole	0.200	0.4	< LOQ	ppm	
Propoxur	0.100	0.2	< LOQ	ppm	Carbamate insecticide
Pyrethrins	0.400	1	< LOQ	ppm	
Pyridaben	0.100	0.2	< LOQ	ppm	Unclassified insecticide
Spinosad	0.100	0.2	< LOQ	ppm	Spinosyn insecticide
Spiromesifen	0.100	0.2	< LOQ	ppm	Keto-enol insecticide
Spirotetramat	0.100	0.2	< LOQ	ppm	Keto-enol insecticide
Spiroxamine	0.200	0.4	< LOQ	ppm	Unclassified fungicide
Tebuconazole	0.200	0.4	< LOQ	ppm	
Thiacloprid	0.100	0.2	< LOQ	ppm	
Thiamethoxam	0.100	0.2	< LOQ	ppm	Neonicotinoid insectide
Trifloxystrobin	0.100	0.2	< LOQ	ppm	Strobin fungicide

Results above the action level fail Oregon state testing requirements and will be highlighted RED.

LOQ= Limit of Quantitation; PPM= Parts per million; ND= Not detected; NT= Not tested; AC= Above calibration range. PASS/FAIL status based on OAR 333-007.



Carson Newkirk
Laboratory Manager - 10/12/2023

PREE Laboratories - South
545 SW 2nd St, #202, Corvallis, OR 97333
541-257-5002 / OLCC 010-10087092BDA / www.PREElab.com

FOR INFORMATIONAL USE ONLY - NOT FOR REGULATORY PURPOSES

Composite Sample (02,03,04,05,06)

Pinnacle Analytics

010-101599328A3

Sample ID: C231490-01

METRC Batch #:

Matrix: Useable Marijuana

Date Sampled: 10/05/23 09:15

Date Accepted: 10/05/23

Batch ID: 127 - 23 - AGH

Batch Size:

Sampling Method/SOP: SOP.T.20.010

Microbial Analysis

Date/Time Extracted: 10/06/23 09:28

Date/Time Analyzed: 10/9/2023 3:09:05PM

Analysis Method/SOP: LSOP #310

Sample extracted and analyzed at PREE Lab - South

Analyte	Result	Units	Pass/Fail
Salmonella spp.	Absent	/g	PASS
STEC E. coli	Absent	/g	PASS

Analytical instrumentation: Thomas Scientific Applied Biosystem qPCR located at PREE Lab - South



Carson Newkirk
Laboratory Manager - 10/12/2023

PREE Laboratories - South
545 SW 2nd St, #202, Corvallis, OR 97333
541-257-5002 / OLCC 010-10087092BDA / www.PREElab.com
FOR INFORMATIONAL USE ONLY - NOT FOR REGULATORY PURPOSES

Composite Sample (02,03,04,05,06)

Pinnacle Analytics

010-101599328A3

Sample ID: C231490-01

Matrix: Useable Marijuana

METRC Batch #:

Date Sampled: 10/05/23 09:15

Date Accepted: 10/05/23

Batch ID: 127 - 23 - AGH

Batch Size:

Sampling Method/SOP: SOP.T.20.010

Heavy Metals Analysis

Date Extracted: 10/06/23

Date Analyzed: 10/09/23

Analysis Method/SOP: LSOP #309

Sample extracted and analyzed at PREE Lab - South

Analyte	LOQ (ug/g)	Action Level (ug/g)	Result (ug/g)
Mercury	0.0400	0.1	ND
Lead	0.160	0.5	ND
Cadmium	0.0800	0.2	ND
Arsenic	0.0800	0.2	ND

LOQ= Limit of Quantitation; ND= Not Detected;
The reported result is based on sample weight for this sample;
Analytical instrumentation: Agilent 7850 ICP-MS located at PREE Lab - South



Carson Newkirk
Laboratory Manager - 10/12/2023

PREE Laboratories - South
545 SW 2nd St, #202, Corvallis, OR 97333
541-257-5002 / OLCC 010-10087092BDA / www.PREElab.com

FOR INFORMATIONAL USE ONLY - NOT FOR REGULATORY PURPOSES

Composite Sample (02,03,04,05,06)

Pinnacle Analytics

010-101599328A3

Sample ID: C231490-01

Matrix: Useable Marijuana

METRC Batch #:

Date Sampled: 10/05/23 09:15

Date Accepted: 10/05/23

Batch ID: 127 - 23 - AGH

Batch Size:

Sampling Method/SOP: SOP.T.20.010

Mycotoxins

Date Extracted: 10/11/23

Date Analyzed: 10/12/23

Analysis Method/SOP: SOP.T.40.080

Sample extracted and analyzed at PREE Lab - North

Analyte	LOQ (ug/g)	Action Level	Result (ug/g)
Total Aflatoxins	0.0100	0.02	ND
Ochratoxin A	0.0100	0.02	ND
Aflatoxin G2	0.0100	0.02	ND
Aflatoxin G1	0.0100	0.02	ND
Aflatoxin B2	0.0100	0.02	ND
Aflatoxin B1	0.0100	0.02	ND

LOQ= Limit of Quantitation; ND= Not Detected;
The reported result is based on sample weight for this sample;
Analytical instrumentation: Perkin Elemer Qsight LX50



Carson Newkirk
Laboratory Manager - 10/12/2023

PREE Laboratories - South
545 SW 2nd St, #202, Corvallis, OR 97333
541-257-5002 / OLCC 010-10087092BDA / www.PREElab.com

Quality Control

Batch: C23J036 - LSOP #310 Microbial Analysis

Blank(C23J036-BLK1)			Extracted: 10/06/23 09:28			Analyzed: 10/09/23 15:09			
Analyte	Result	LOQ	Recovery Limits	Notes	Analyte	Result	LOQ	Recovery Limits	Notes
STEC E. coli	Absent	0.500 (g)	< LOQ		Salmonella spp.	Absent	0.500 (g)	< LOQ	

Reference(C23J036-SRM1)			Extracted: 10/06/23 09:28			Analyzed: 10/09/23 15:09			
Analyte	Result	LOQ	Recovery Limits	Notes	Analyte	Result	LOQ	Recovery Limits	Notes
STEC E. coli	Present	(g)	100-100		Salmonella spp.	Present	(g)	100-100	

Batch: C23J040 - LSOP #309 Heavy Metal Quantification

Blank(C23J040-BLK1)			Extracted: 10/06/23 12:25			Analyzed: 10/09/23 11:49			
Analyte	Result	LOQ	Recovery Limits	Notes	Analyte	Result	LOQ	Recovery Limits	Notes
Arsenic	< LOQ	0.0800 (ug/g)	< LOQ		Lead	< LOQ	0.160 (ug/g)	< LOQ	
Mercury	< LOQ	0.0400 (ug/g)	< LOQ		Cadmium	< LOQ	0.0800 (ug/g)	< LOQ	

LCS(C23J040-BS1)			Extracted: 10/06/23 12:25			Analyzed: 10/09/23 11:53			
Analyte	% Recovery	LOQ	Recovery Limits	Notes	Analyte	% Recovery	LOQ	Recovery Limits	Notes
Arsenic	93.4	0.0800 (ug/g)	80-115		Lead	103	0.160 (ug/g)	80-115	
Mercury	96.0	0.0400 (ug/g)	80-115		Cadmium	95.1	0.0800 (ug/g)	80-115	

LCS Dup(C23J040-BSD1)			Extracted: 10/06/23 12:25			Analyzed: 10/09/23 13:28			
Analyte	% Recovery	LOQ	Recovery Limits	Notes	Analyte	% Recovery	LOQ	Recovery Limits	Notes
Arsenic	96.4	0.0800 (ug/g)	80-115		Lead	99.7	0.160 (ug/g)	80-115	
Mercury	97.9	0.0400 (ug/g)	80-115		Cadmium	94.7	0.0800 (ug/g)	80-115	

Batch: P23J042 - SOP.T.30.060 Pesticide Prep

Blank(P23J042-BLK1)			Extracted: 10/11/23 10:56			Analyzed: 10/12/23 09:38			
Analyte	Result	LOQ	Recovery Limits	Notes	Analyte	Result	LOQ	Recovery Limits	Notes
Methyl parathion	< LOQ	0.100 (ppm)	< LOQ		Ochratoxin A	< LOQ	0.0100 (ppm)	< LOQ	
Aflatoxin G2	< LOQ	0.0100 (ppm)	< LOQ		MGK-264	< LOQ	0.100 (ppm)	< LOQ	
Aflatoxin G1	< LOQ	0.0100 (ppm)	< LOQ		Chlorfenapyr	< LOQ	0.400 (ppm)	< LOQ	
Aflatoxin B2	< LOQ	0.0100 (ppm)	< LOQ		Cyfluthrin	< LOQ	0.400 (ppm)	< LOQ	
Aflatoxin B1	< LOQ	0.0100 (ppm)	< LOQ		Cypermethrin	< LOQ	0.400 (ppm)	< LOQ	
Abamectin	< LOQ	0.200 (ppm)	< LOQ		Total Aflatoxins	< LOQ	0.0100 (ppm)	< LOQ	
Acephate	< LOQ	0.200 (ppm)	< LOQ		Acequinocyl	< LOQ	1.00 (ppm)	< LOQ	
Acetamiprid	< LOQ	0.100 (ppm)	< LOQ		Aldicarb	< LOQ	0.200 (ppm)	< LOQ	
Azoxystrobin	< LOQ	0.100 (ppm)	< LOQ		Bifenazate	< LOQ	0.100 (ppm)	< LOQ	
Bifenthrin	< LOQ	0.100 (ppm)	< LOQ		Boscalid	< LOQ	0.200 (ppm)	< LOQ	
Carbaryl	< LOQ	0.100 (ppm)	< LOQ		Carbofuran	< LOQ	0.100 (ppm)	< LOQ	
Chlorantraniliprole	< LOQ	0.100 (ppm)	< LOQ		Chlorpyrifos	< LOQ	0.100 (ppm)	< LOQ	
Clofentezine	< LOQ	0.100 (ppm)	< LOQ		Daminozide	< LOQ	0.400 (ppm)	< LOQ	



Carson Newkirk
Laboratory Manager - 10/12/2023

PREE Laboratories - South
545 SW 2nd St, #202, Corvallis, OR 97333
541-257-5002 / OLCC 010-10087092BDA / www.PREElab.com

Quality Control

Batch: P23J042 - SOP.T.30.060 Pesticide Prep (Continued)

Blank(P23J042-BLK1)			Extracted: 10/11/23 10:56			Analyzed: 10/12/23 09:38			
Analyte	Result	LOQ	Recovery Limits	Notes	Analyte	Result	LOQ	Recovery Limits	Notes
DDVP (Dichlorvos)	< LOQ	0.400 (ppm)	< LOQ		Diazinon	< LOQ	0.100 (ppm)	< LOQ	
Dimethoate	< LOQ	0.100 (ppm)	< LOQ		Ethoprophos	< LOQ	0.100 (ppm)	< LOQ	
Etofenprox	< LOQ	0.200 (ppm)	< LOQ		Etoazole	< LOQ	0.100 (ppm)	< LOQ	
Fenoxycarb	< LOQ	0.100 (ppm)	< LOQ		Fenpyroximate	< LOQ	0.200 (ppm)	< LOQ	
Fipronil	< LOQ	0.200 (ppm)	< LOQ		Fonicamid	< LOQ	0.400 (ppm)	< LOQ	
Fludioxonil	< LOQ	0.200 (ppm)	< LOQ		Hexythiazox	< LOQ	0.400 (ppm)	< LOQ	
Imazalil	< LOQ	0.100 (ppm)	< LOQ		Imidacloprid	< LOQ	0.200 (ppm)	< LOQ	
Kresoxim-methyl	< LOQ	0.200 (ppm)	< LOQ		Malathion	< LOQ	0.100 (ppm)	< LOQ	
Metalaxyl	< LOQ	0.100 (ppm)	< LOQ		Methiocarb	< LOQ	0.100 (ppm)	< LOQ	
Methomyl	< LOQ	0.200 (ppm)	< LOQ		Myclobutanil	< LOQ	0.100 (ppm)	< LOQ	
Naled	< LOQ	0.200 (ppm)	< LOQ		Oxamyl	< LOQ	0.400 (ppm)	< LOQ	
Paclobutrazol	< LOQ	0.200 (ppm)	< LOQ		Permethrins	< LOQ	0.100 (ppm)	< LOQ	
Phosmet	< LOQ	0.100 (ppm)	< LOQ		Piperonyl butoxide	< LOQ	1.00 (ppm)	< LOQ	
Prallethrin	< LOQ	0.100 (ppm)	< LOQ		Propiconazole	< LOQ	0.200 (ppm)	< LOQ	
Propoxur	< LOQ	0.100 (ppm)	< LOQ		Pyridaben	< LOQ	0.100 (ppm)	< LOQ	
Pyrethrins	< LOQ	0.400 (ppm)	< LOQ		Spinosad	< LOQ	0.100 (ppm)	< LOQ	
Spiromesifen	< LOQ	0.100 (ppm)	< LOQ		Spirotetramat	< LOQ	0.100 (ppm)	< LOQ	
Spiroxamine	< LOQ	0.200 (ppm)	< LOQ		Tebuconazole	< LOQ	0.200 (ppm)	< LOQ	
Thiacloprid	< LOQ	0.100 (ppm)	< LOQ		Thiamethoxam	< LOQ	0.100 (ppm)	< LOQ	
Trifloxystrobin	< LOQ	0.100 (ppm)	< LOQ						

LCS(P23J042-BS1)			Extracted: 10/11/23 10:56			Analyzed: 10/12/23 09:38			
Analyte	% Recovery	LOQ	Recovery Limits	Notes	Analyte	% Recovery	LOQ	Recovery Limits	Notes
Methyl parathion	213	0.100 (ppm)	50-150	HIGH BIAS	Ochratoxin A	175	0.0100 (ppm)	60-120	HIGH BIAS
Aflatoxin G2	168	0.0100 (ppm)	60-120	HIGH BIAS	MGK-264	106	0.100 (ppm)	50-150	
Aflatoxin G1	152	0.0100 (ppm)	60-120	HIGH BIAS	Chlorfenapyr	139	0.400 (ppm)	60-120	HIGH BIAS
Aflatoxin B2	155	0.0100 (ppm)	60-120	HIGH BIAS	Cyfluthrin	118	0.400 (ppm)	50-150	
Aflatoxin B1	161	0.0100 (ppm)	60-120	HIGH BIAS	Cypermethrin	114	0.400 (ppm)	50-150	
Abamectin	148	0.200 (ppm)	50-150		Acephate	163	0.200 (ppm)	60-120	HIGH BIAS
Acequinocyl	218	1.00 (ppm)	40-160	HIGH BIAS	Acetamiprid	149	0.100 (ppm)	60-120	HIGH BIAS
Aldicarb	193	0.200 (ppm)	60-120	HIGH BIAS	Azoxystrobin	170	0.100 (ppm)	60-120	HIGH BIAS
Bifenazate	106	0.100 (ppm)	60-120		Bifenthrin	113	0.100 (ppm)	50-150	
Boscalid	165	0.200 (ppm)	60-120	HIGH BIAS	Carbaryl	151	0.100 (ppm)	60-120	HIGH BIAS
Carbofuran	154	0.100 (ppm)	60-120	HIGH BIAS	Chlorantraniliprole	163	0.100 (ppm)	60-120	HIGH BIAS
Chlorpyrifos	107	0.100 (ppm)	60-120		Clofentezine	146	0.100 (ppm)	60-120	HIGH BIAS
Daminozide	144	0.400 (ppm)	60-120	HIGH BIAS	DDVP (Dichlorvos)	128	0.400 (ppm)	60-120	HIGH BIAS
Diazinon	143	0.100 (ppm)	60-120	HIGH BIAS	Dimethoate	155	0.100 (ppm)	60-120	HIGH BIAS



Carson Newkirk
Laboratory Manager - 10/12/2023

PREE Laboratories - South
545 SW 2nd St, #202, Corvallis, OR 97333
541-257-5002 / OLCC 010-10087092BDA / www.PREElab.com

Quality Control

Batch: P23J042 - SOP.T.30.060 Pesticide Prep (Continued)

LCS(P23J042-BS1)			Extracted: 10/11/23 10:56			Analyzed: 10/12/23 09:38			
Analyte	% Recovery	LOQ	Recovery Limits	Notes	Analyte	% Recovery	LOQ	Recovery Limits	Notes
Ethoprophos	153	0.100 (ppm)	60-120	HIGH BIAS	Etofenprox	182	0.200 (ppm)	50-150	HIGH BIAS
Etoazole	123	0.100 (ppm)	60-120	HIGH BIAS	Fenoxycarb	171	0.100 (ppm)	60-120	HIGH BIAS
Fenpyroximate	131	0.200 (ppm)	60-120	HIGH BIAS	Fipronil	162	0.200 (ppm)	60-120	HIGH BIAS
Flonicamid	140	0.400 (ppm)	60-120	HIGH BIAS	Fludioxonil	143	0.200 (ppm)	50-150	
Hexythiazox	116	0.400 (ppm)	60-120		Imazalil	170	0.100 (ppm)	60-120	HIGH BIAS
Imidacloprid	155	0.200 (ppm)	60-120	HIGH BIAS	Kresoxim-methyl	155	0.200 (ppm)	60-120	HIGH BIAS
Malathion	167	0.100 (ppm)	60-120	HIGH BIAS	Metalaxyl	158	0.100 (ppm)	60-120	HIGH BIAS
Methiocarb	151	0.100 (ppm)	60-120	HIGH BIAS	Methomyl	154	0.200 (ppm)	60-120	HIGH BIAS
Myclobutanil	155	0.100 (ppm)	60-120	HIGH BIAS	Naled	166	0.200 (ppm)	50-150	HIGH BIAS
Oxamyl	158	0.400 (ppm)	60-120	HIGH BIAS	Paclbutrazol	155	0.200 (ppm)	60-120	HIGH BIAS
Permethrins	159	0.100 (ppm)	50-150	HIGH BIAS	Phosmet	162	0.100 (ppm)	50-150	HIGH BIAS
Piperonyl butoxide	116	1.00 (ppm)	60-120		Prallethrin	147	0.100 (ppm)	60-120	HIGH BIAS
Propiconazole	142	0.200 (ppm)	60-120	HIGH BIAS	Propoxur	148	0.100 (ppm)	60-120	HIGH BIAS
Pyridaben	139	0.100 (ppm)	50-150		Pyrethrins	141	0.400 (ppm)	60-120	HIGH BIAS
Spinosad	145	0.100 (ppm)	50-150		Spiromesifen	118	0.100 (ppm)	60-120	
Spirotetramat	162	0.100 (ppm)	60-120	HIGH BIAS	Spiroxamine	78.7	0.200 (ppm)	60-120	
Tebuconazole	149	0.200 (ppm)	60-120	HIGH BIAS	Thiacloprid	153	0.100 (ppm)	60-120	HIGH BIAS
Thiamethoxam	161	0.100 (ppm)	60-120	HIGH BIAS	Trifloxystrobin	136	0.100 (ppm)	60-120	HIGH BIAS

LCS Dup(P23J042-BSD1)			Extracted: 10/11/23 10:56			Analyzed: 10/12/23 09:38			
Analyte	% Recovery	LOQ	Recovery Limits	Notes	Analyte	% Recovery	LOQ	Recovery Limits	Notes
Methyl parathion	234	0.100 (ppm)	50-150	HIGH BIAS	Ochratoxin A	165	0.0100 (ppm)	60-120	HIGH BIAS
Aflatoxin G2	180	0.0100 (ppm)	60-120	HIGH BIAS	MGK-264	126	0.100 (ppm)	50-150	
Aflatoxin G1	154	0.0100 (ppm)	60-120	HIGH BIAS	Chlorfenapyr	173	0.400 (ppm)	60-120	HIGH BIAS
Aflatoxin B2	146	0.0100 (ppm)	60-120	HIGH BIAS	Cyfluthrin	127	0.400 (ppm)	50-150	
Aflatoxin B1	163	0.0100 (ppm)	60-120	HIGH BIAS	Cypermethrin	108	0.400 (ppm)	50-150	
Abamectin	157	0.200 (ppm)	50-150	HIGH BIAS	Acephate	156	0.200 (ppm)	60-120	HIGH BIAS
Acequinocyl	214	1.00 (ppm)	40-160	HIGH BIAS	Acetamiprid	150	0.100 (ppm)	60-120	HIGH BIAS
Aldicarb	181	0.200 (ppm)	60-120	HIGH BIAS	Azoxystrobin	166	0.100 (ppm)	60-120	HIGH BIAS
Bifenazate	118	0.100 (ppm)	60-120		Bifenthrin	111	0.100 (ppm)	50-150	
Boscalid	163	0.200 (ppm)	60-120	HIGH BIAS	Carbaryl	145	0.100 (ppm)	60-120	HIGH BIAS
Carbofuran	149	0.100 (ppm)	60-120	HIGH BIAS	Chlorantraniliprole	155	0.100 (ppm)	60-120	HIGH BIAS
Chlorpyrifos	108	0.100 (ppm)	60-120		Clofentezine	157	0.100 (ppm)	60-120	HIGH BIAS
Daminozide	124	0.400 (ppm)	60-120	HIGH BIAS	DDVP (Dichlorvos)	130	0.400 (ppm)	60-120	HIGH BIAS
Diazinon	152	0.100 (ppm)	60-120	HIGH BIAS	Dimethoate	150	0.100 (ppm)	60-120	HIGH BIAS
Ethoprophos	148	0.100 (ppm)	60-120	HIGH BIAS	Etofenprox	168	0.200 (ppm)	50-150	HIGH BIAS
Etoazole	127	0.100 (ppm)	60-120	HIGH BIAS	Fenoxycarb	165	0.100 (ppm)	60-120	HIGH BIAS



Carson Newkirk
Laboratory Manager - 10/12/2023

PREE Laboratories - South
545 SW 2nd St, #202, Corvallis, OR 97333
541-257-5002 / OLCC 010-10087092BDA / www.PREElab.com

Quality Control

Batch: P23J042 - SOP.T.30.060 Pesticide Prep (Continued)

LCS Dup(P23J042-BSD1)			Extracted: 10/11/23 10:56			Analyzed: 10/12/23 09:38			
Analyte	% Recovery	LOQ	Recovery Limits	Notes	Analyte	% Recovery	LOQ	Recovery Limits	Notes
Fenpyroximate	134	0.200 (ppm)	60-120	HIGH BIAS	Fipronil	158	0.200 (ppm)	60-120	HIGH BIAS
Flonicamid	135	0.400 (ppm)	60-120	HIGH BIAS	Fludioxonil	142	0.200 (ppm)	50-150	
Hexythiazox	114	0.400 (ppm)	60-120		Imazalil	170	0.100 (ppm)	60-120	HIGH BIAS
Imidacloprid	148	0.200 (ppm)	60-120	HIGH BIAS	Kresoxim-methyl	154	0.200 (ppm)	60-120	HIGH BIAS
Malathion	161	0.100 (ppm)	60-120	HIGH BIAS	Metalaxyl	155	0.100 (ppm)	60-120	HIGH BIAS
Methiocarb	144	0.100 (ppm)	60-120	HIGH BIAS	Methomyl	146	0.200 (ppm)	60-120	HIGH BIAS
Myclobutanil	149	0.100 (ppm)	60-120	HIGH BIAS	Naled	155	0.200 (ppm)	50-150	HIGH BIAS
Oxamyl	156	0.400 (ppm)	60-120	HIGH BIAS	Paclobutrazol	153	0.200 (ppm)	60-120	HIGH BIAS
Permethrins	151	0.100 (ppm)	50-150	HIGH BIAS	Phosmet	158	0.100 (ppm)	50-150	HIGH BIAS
Piperonyl butoxide	112	1.00 (ppm)	60-120		Prallethrin	170	0.100 (ppm)	60-120	HIGH BIAS
Propiconazole	154	0.200 (ppm)	60-120	HIGH BIAS	Propoxur	140	0.100 (ppm)	60-120	HIGH BIAS
Pyridaben	138	0.100 (ppm)	50-150		Pyrethrins	134	0.400 (ppm)	60-120	HIGH BIAS
Spinosad	157	0.100 (ppm)	50-150	HIGH BIAS	Spiromesifen	121	0.100 (ppm)	60-120	HIGH BIAS
Spirotetramat	158	0.100 (ppm)	60-120	HIGH BIAS	Spiroxamine	79.2	0.200 (ppm)	60-120	
Tebuconazole	150	0.200 (ppm)	60-120	HIGH BIAS	Thiacloprid	150	0.100 (ppm)	60-120	HIGH BIAS
Thiamethoxam	158	0.100 (ppm)	60-120	HIGH BIAS	Trifloxystrobin	160	0.100 (ppm)	60-120	HIGH BIAS

Notes and Definitions

Item	Definition
HIGH BIAS	High analyte recovery, yet no detection of that analyte in samples.



Carson Newkirk
Laboratory Manager - 10/12/2023